

# AGD 645

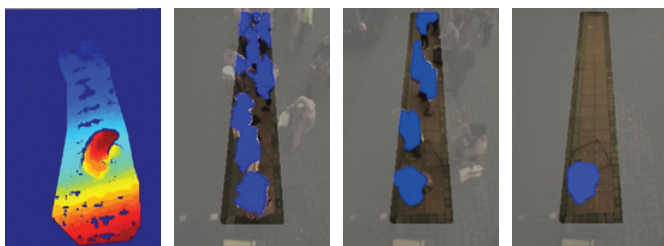
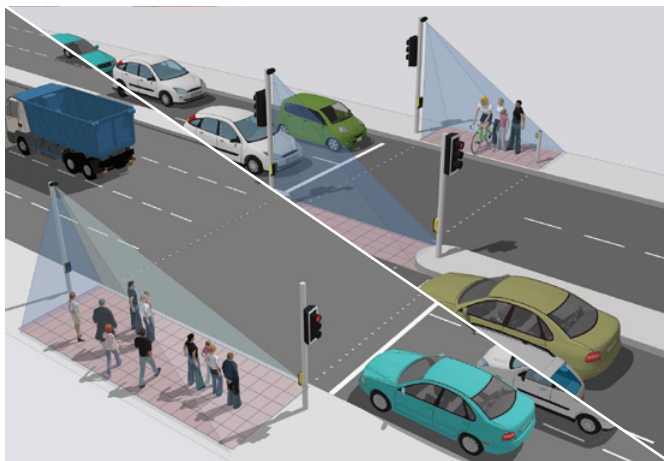
## PEDESTRIAN DETECTOR

The AGD 645 Pedestrian Detector is a smart, optical, dynamic environment detector that makes crossings safer and more efficient by delivering robust Volumetrics Data within large 10m x 3m zones. Multiple units integrate to cover 'super-crossings'.

It is a high-performance product that processes information on board with new chip-set and sophisticated algorithms for automated decision-making to provide ultra-reliable detection.

The AGD 645 employs 3D HD stereo-optics to detect stationary & moving targets over a large 10m x 3m zone and provides Volumetrics Data in the form of percentage occupancy. It has an outstanding capability to detect people while rejecting shadows, litter and leaves and small objects such as birds walking through the zone.

The platform covers the needs of 'Smart City' systems with: IP, POE, Volumetrics and real-time video capabilities which allow the 645 to feed data and pictures 'down the wire' straight into ITS control rooms - empowering truly informed dynamic decision-making.



### Features

- 10m x 3m zone - save on infrastructure costs
- AGD 3D HD stereo-vision - down to min 15 lux
- Volumetrics – dynamic data for high efficiency
- WiFi AGD Touch-setup - speeds installation & reduces risk
- Quick-mask tool - easy zone selection
- IP & Real-time video - instant information for improved safety

### AGD Volumetric

DYNAMIC ENVIRONMENT DETECTION

#### Traffic & Pedestrian Control



*safer, greener, more efficient*

